

# TIMELESS GLAMOUR

Transforming a traditional  
townhouse into a stylish home

PHOTOGRAPHS NEALE SMITH WORDS BERNARD INTERIORS



## design project | GLASGOW

Offering stunning views across the city and a floor area of 9,700ft<sup>2</sup> over five storeys, this category A listed Victorian townhouse in the heart of Glasgow's Park District had a lot of potential to create a beautiful family home.

The property had lain derelict for over five years, having latterly been used for offices. Bernard Interiors worked alongside the developer for three years to win planning permission to convert the building back to residential use.

It now brings together the client's love of fashion and exotic travel, the restoration of grand period features and the everyday needs of a busy family. It also represents the significant investment in superb quality and craftsmanship.

"The brief was to create an inviting family home with an abundance of luxe styling and a contemporary edge, whilst celebrating the building's grand proportions, elegant detailing and period features," explains Jen Bernard, founder and managing director of Bernard Interiors.

"The layout of the building has been carefully reconfigured from the original 21 rooms, taking into account the internal walls which needed to be retained for the listing and those that could be removed, to create several suites."

The team began the design process by planning and implementing the restoration of period features using specialist craftsmen, including bespoke cornicing, ceiling roses, original fireplaces and a 4.5m high grand entrance hall.

Each room has a distinct design with unique artwork

offset by luxurious fabrics, specially commissioned rugs and a variety of objets d'art. Colour was a significant part of the brief and Bernard Interiors ensured every room is vibrant and sophisticated with its own identity and colour palette.

Bespoke joinery has been fitted throughout including new walnut doors, and a lift which was originally installed in the 1920s has been fully refurbished.

Oversized features include antiqued mirror panels from floor to ceiling in the hall and the show-stopping

12 metre chandelier which spills through the stairwell.

"The mirror panels bring light right into the hall but were a challenge to fit due to their size and the fact that in an old building even after renovation the walls are never quite straight," Jen added.

"The contractor worked from our CAD drawings to install the panels in the right order and then time was spent perfecting their alignment.

"The chandelier was commissioned from George Singer and is made from thousands of smoked Swarovski crystals, each applied on site by hand from scaffolding erected on every floor. The chandelier creates maximum impact as you enter

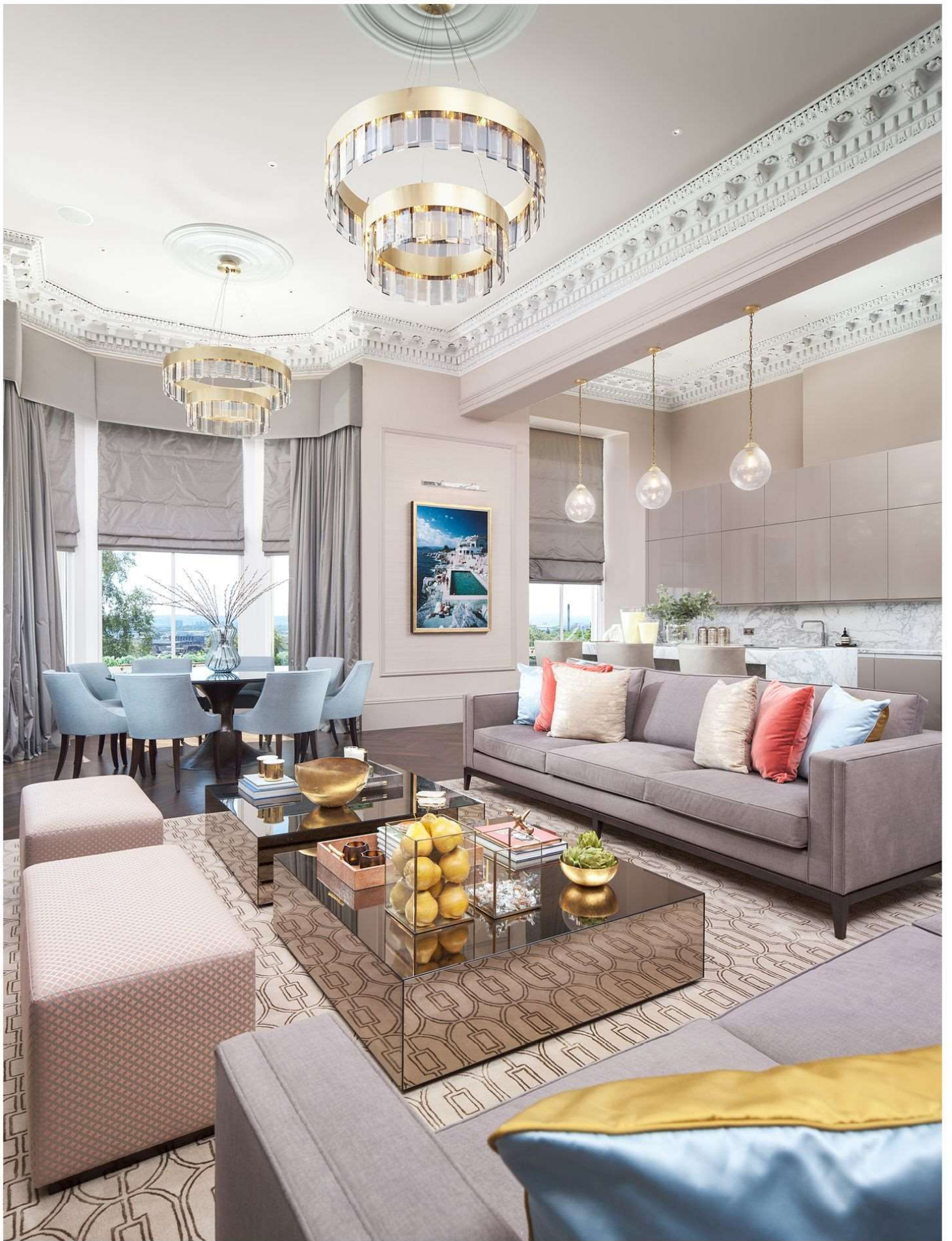
the home, greatly enhancing the effect of the beautiful but imposing staircase."

Bespoke floor to ceiling furniture creates a focal point in each of the four reception rooms and provides functional storage for busy family living.

Bernard Interiors worked with marble suppliers in Venice to source materials for the kitchen island and surfaces, master bathroom and central island in the gentleman's cigar room, enriching the luxurious feel of the rooms.

In the drawing room, family photos and treasured







pieces mix with accessories from around the world and original paintings, sourced and commissioned respectively by Bernard Interiors.

The large open plan kitchen-living-dining space has a calm, light interior featuring shades of mustard, coral and baby blue. In the dining area there are silk panels framed by painted beading, and a 1940s-inspired vellum-clad cabinet with aged brass detail and bespoke carver chairs.

Decorative details in the cigar room include vintage champagne crates and there is a built-in humidor.

In the snug, Slim Aarons photography adds to the glamour. Even the laundry room, with its bespoke banana leaf vinyl wallpaper, is stylish as well as functional.

The master suite on the second floor is a retreat for the home's busy owners and consists of a bedroom,

dressing room and bathroom in neutral shades with glamorous accessories and details. The dressing room combines a crystal chandelier, bespoke coral velvet stool, leopard print chair and shagreen leather upholstered wardrobes with striking bone handles.

In the bathroom there are shades of peach and gold, and a bespoke mirrored vanity with crystal handles.

"The underlying design throughout is timeless," commented Jen. "The high quality of the new features and fittings matches the restored historic features. A harmonious mix of styles makes for a comfortable space which is full of character where our client can relax and entertain."

[WWW.BERNARDINTERIORS.CO.UK](http://WWW.BERNARDINTERIORS.CO.UK)

